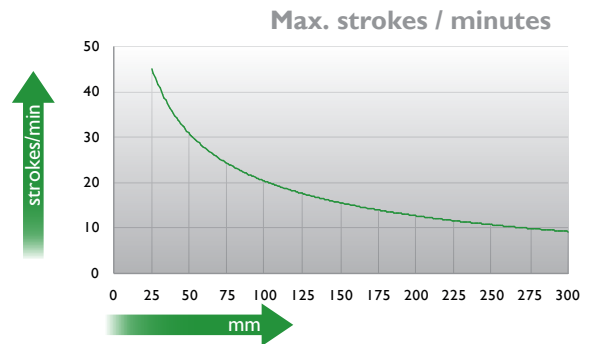
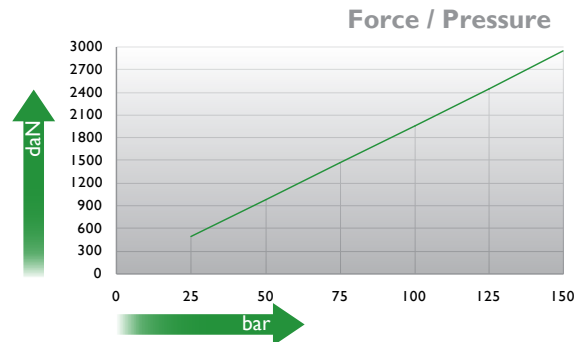
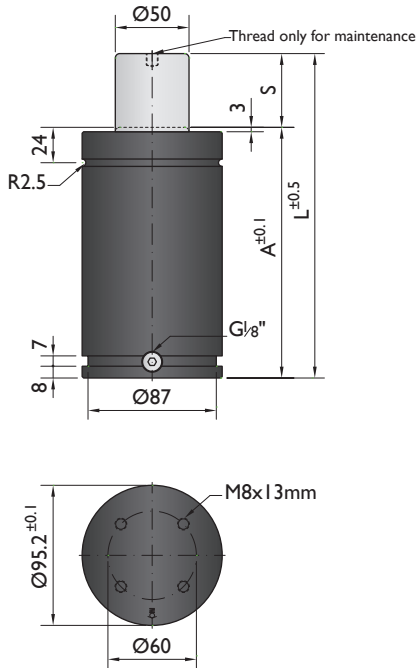


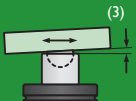


CNOMO  
EM24.54.700

PSA  
E24.54.815.G



Ordering example: 4 x G-3000-125

Order No.	S <sup>(1)</sup> mm	L mm	A mm	F <sub>0</sub> <sup>(2)</sup> daN (20°C, 150 bar)	F daN	 <sup>(3)</sup>	kg
G-3000-25	25	170	145	3000	3500	No	5.86
G-3000-38	38.1	196.2	158.1		3700	No	6.20
G-3000-50	50	220	170		3800	No	6.66
G-3000-63	63.5	247	183.5		3900	No	7.00
G-3000-80	80	280	200		4000	No	8.28
G-3000-100	100	320	220		4200	Yes	8.65
G-3000-125	125	370	245		4200	Yes	8.97
G-3000-160	160	440	280		4200	Yes	9.86
G-3000-200	200	520	320		4300	Yes	10.92
G-3000-250	250	620	370		4300	Yes	12.25
G-3000-300	300	720	420	4400	Yes	13.58	

<sup>(1)</sup> other strokes under request

<sup>(2)</sup> alternative forces upon request

<sup>(3)</sup> ESK available for other strokes

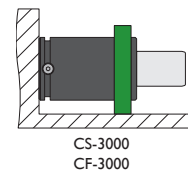
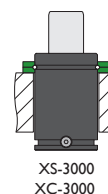
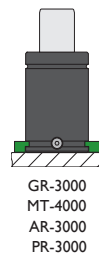
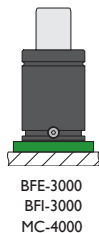
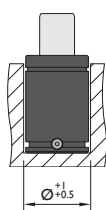
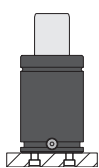


Pressure medium N<sub>2</sub>  
Max. Charging pressure 150 bar  
Min. Charging pressure 25 bar

Working temperature 0-80°C  
Temperature related force increase +0.34%/°C  
Max. working speed 1.6 m/s

Min. security stroke 10%  
Repair Kit KIT G-3000  
Linkable G1/8"

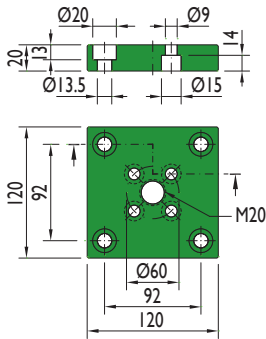
## Mounting possibilities



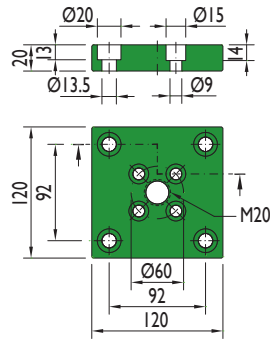
Flange must not support spring's force

## Flanges

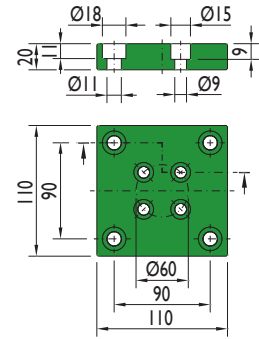
**BFE-3000**



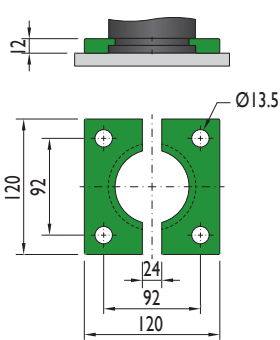
**BFI-3000**



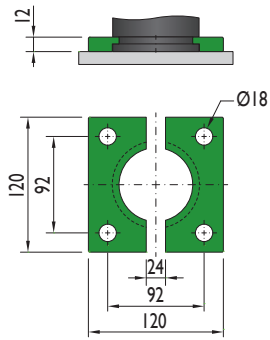
**MC-4000**



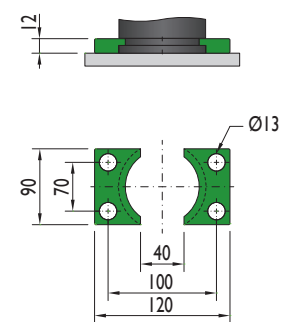
**GR-3000**



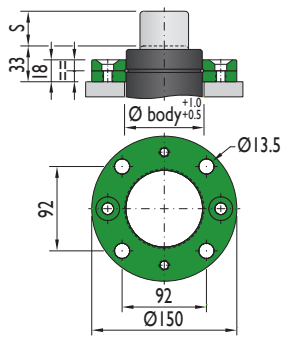
**MT-4000**



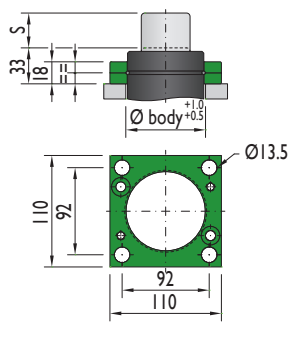
**AR-3000**



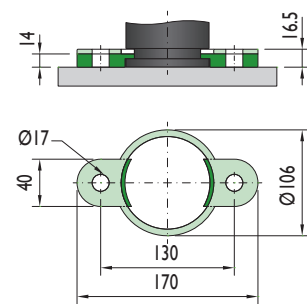
**XS-3000**



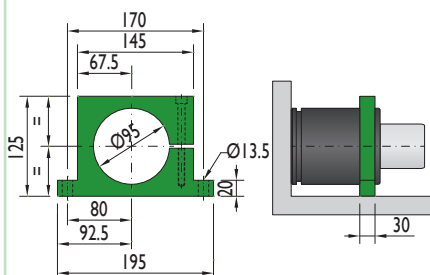
**XC-3000**



**PR-3000**

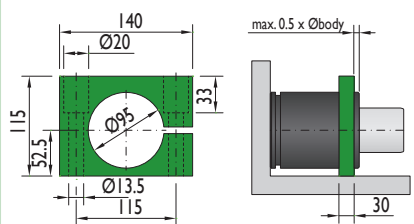


**CS-3000**



Flange must not support spring's force

**CF-3000**



Flange must not support spring's force

Special mounts available on  
[www.nitrogas.com](http://www.nitrogas.com)