

Ordering example: 4 x TS-1000-50

Order No.	S ⁽¹⁾ mm	L mm	A mm	F ₀ ⁽²⁾ daN	F daN		kg
				(20°C, 150 bar)			
TS-1000-6	6	61	55		1300	No	0.36
TS-1000-10	10	78	68		1500	No	0.44
TS-1000-16	16	100	84		1400	No	0.52
TS-1000-25	25	135	110	920	1400	No	0.63
TS-1000-32	32	167	135		1400	No	0.73
TS-1000-40	40	195	155		1400	No	0.81
TS-1000-50	50	230	180		1400	No	0.98

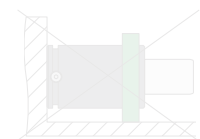
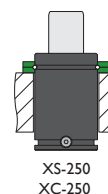
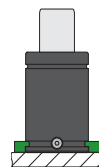
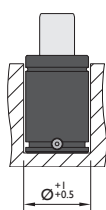
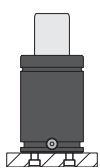
other strokes ⁽¹⁾ under request

alternative forces ⁽²⁾ upon request



Pressure medium	N ₂	Working temperature	0-80°C	Min. security stroke	10%
Max. Charging pressure	150 bar	Temperature related force increase	+0.34%/°C	Repair Kit	KIT TS-1000
Min. Charging pressure	25 bar	Max. working speed	0.5 m/s	Linkable	No

Mounting possibilities



Flanges

